

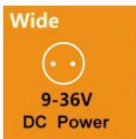
UTC-W1762A

17.3 inch Industrial Panel



Features

- Aluminum die-casting chassis, fanless design
- Wireless Design
- 17.3 inch LED TFT LCD, capacitive touch
- Intel Baytrail Celeron J1900 2.0-2.42G CPU
- 6*COM, 2*LAN, 5*USB2.0, 1*USB3.0
- AT & ATX Model
- Front Panel IP65 Level
- DC 9~36V power input optional



UTC-W1762A is an intelligent, fanless panel PC, 17.3" Panel PC equipped with an Intel® Celeron J1900 processor. Meeting the demands of harsh environments, in addition, the dual GbE LAN, 6 x serial ports, 6 x USB ports, make device connection and integration easy.

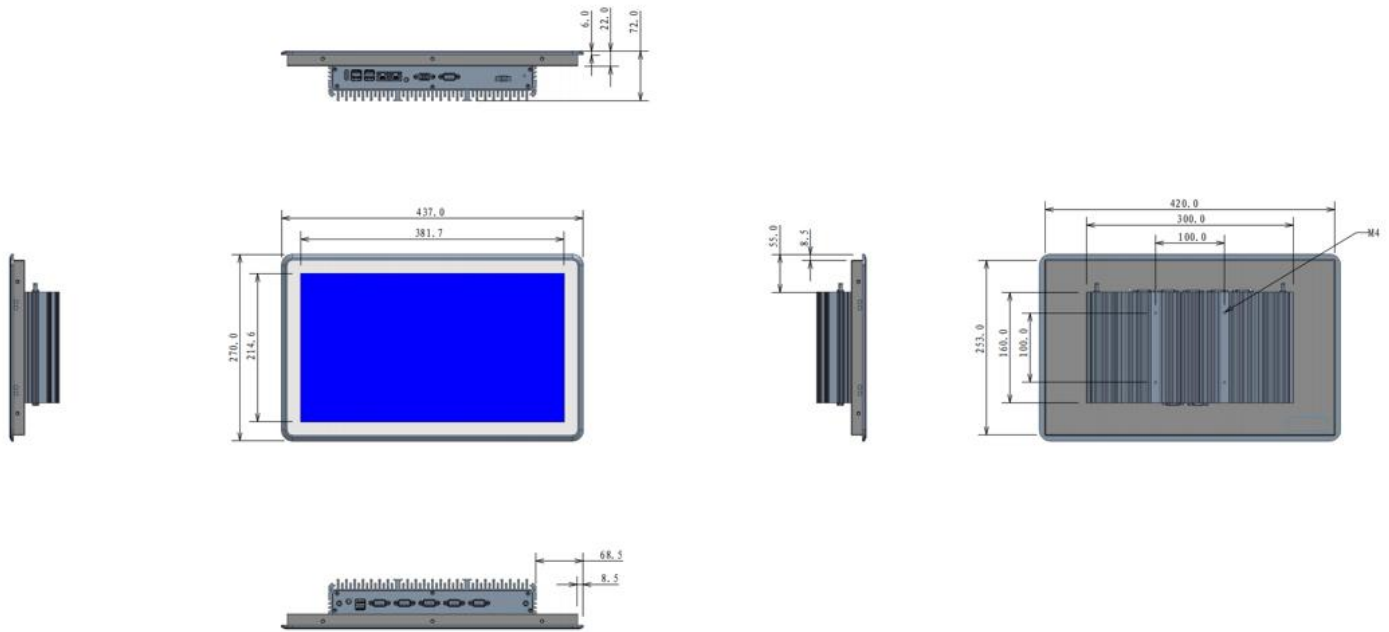
Specifications

| | | | |
|---------------|-------------------------------|---|---|
| Processor | CPU | Intel Baytrail-D Celeron J1900, 2.0~2.42GHz, 4cores, 4threads, 2M cache, 22nm,TDP 10W | |
| | Cooling System | Fanless | |
| | Memory | Single Socket, 4GB-8GB DDR3L | |
| | Storage | mSATA SSD Full Size+SATS 2.5"SSD | |
| | I/O ports | | USB: 5xUSB2.0+1xUSB3.0, Type-A |
| | | | COM: 6xRS232, DB9, 2*RS485/RS422 optional |
| | | | Dual Display: 1xHDMI (1920*1200 @30Hz) 1*VGA (1920*1200 @30Hz) |
| | | Audio: 1×Mic-in, 1x Line-out | |
| Network(LAN) | Expansion: MINI-PCIE | | |
| Input Voltage | Input Voltage | 12V DC (3 Pin Phoenix Connector) , optional 9V-36V DC | |
| | Control SW/LED | Power Button, AT & ATX Model | |
| LCD Display | Display Type: | 17.3 inch TFT LED Panel(LED Backlight) | |
| | Max. Resolution: | 1920x1080/ 16:9 | |
| | Luminance(cd/m ²) | 300nits | |

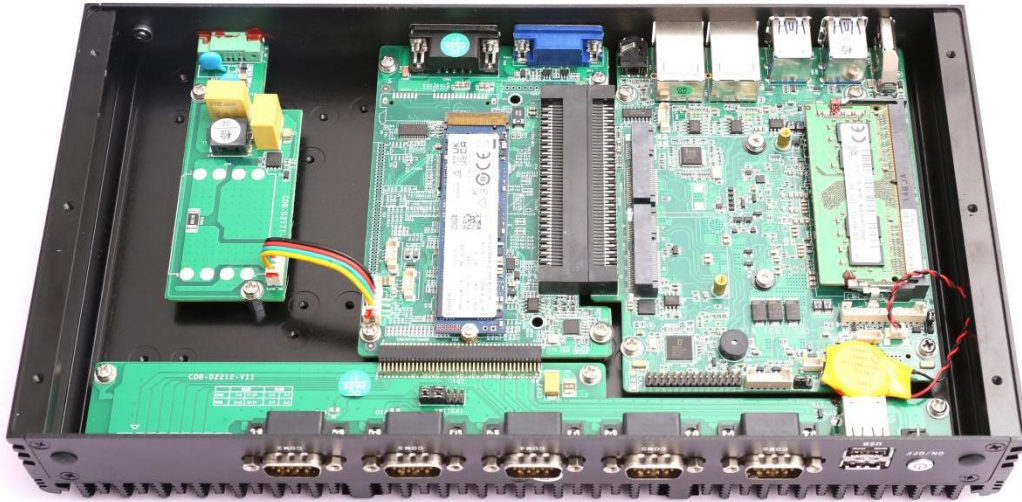
| | | |
|-----------------------|------------------------|---|
| Touchscreen | Touch Type | Capacitive Touch |
| OS Support | OS Support | Microsoft Windows 7/ Windows 10/Windows 11/ Linux |
| Environment | Operating Temperature | 0°C ~ 50°C(14~ 140 °F)(extend temperature optional) |
| | Storage Temperature | -10°C ~ 60°C(-4 ~ 158 °F) |
| | Front Panel Protection | IP65 compliant |
| Mechanical | Dimensions | (W*D*H): 437x270x72mm; Mounting Cut out (W*H): 420*253mm |
| | Weight | 7.3KG N.W. |
| | Color | Black |
| | Material | Aluminum |
| | Certification | CE / RoHS |
| Custom Service | Custom Service | Custom BIOS, System Encryption, Custom LOGO |

Dimensions

Unit: mm







- Cable-less design and Board to Board design
- Highly compatible
- Modular design
- Easy operation: easy assembly and easy Maintenance
- Supports customization

| Packing List | Ordering Information |
|-------------------------|--|
| 1x UTC-W1762A | UTC-W1762A: Projected Capacitive Touch Version |
| 1x Power Adapter | Operating Systems |
| Optional accessories | WIN7 32bit 64bit ENG/CN |
| VESA Bracket | WIN10 32bit 64bit ENG/CN |
| Power Cable 3-pin 200cm | WIN11 32bit 64bit ENG/CN |
| | Linux Ubuntu 12.04/16.04/18.04 |