

# UTC-W2462A

23.6 inch Industrial Panel PC



## Features

- Aluminum die-casting chassis, fanless design
- Wireless Design
- 23.6 inch LED TFT LCD, capacitive touch
- Intel Baytrail Celeron J1900 2.0-2.42G CPU
- 6\*COM, 2\*LAN, 5\*USB2.0, 1\*USB3.0
- AT & ATX Model
- Front Panel IP65 Level
- DC 9~36V power input optional



Fanless



IP65  
F Panel



Flat  
Bezel



Wide



9-36V  
DC Power



Multi



Touch  
Screen



68mm

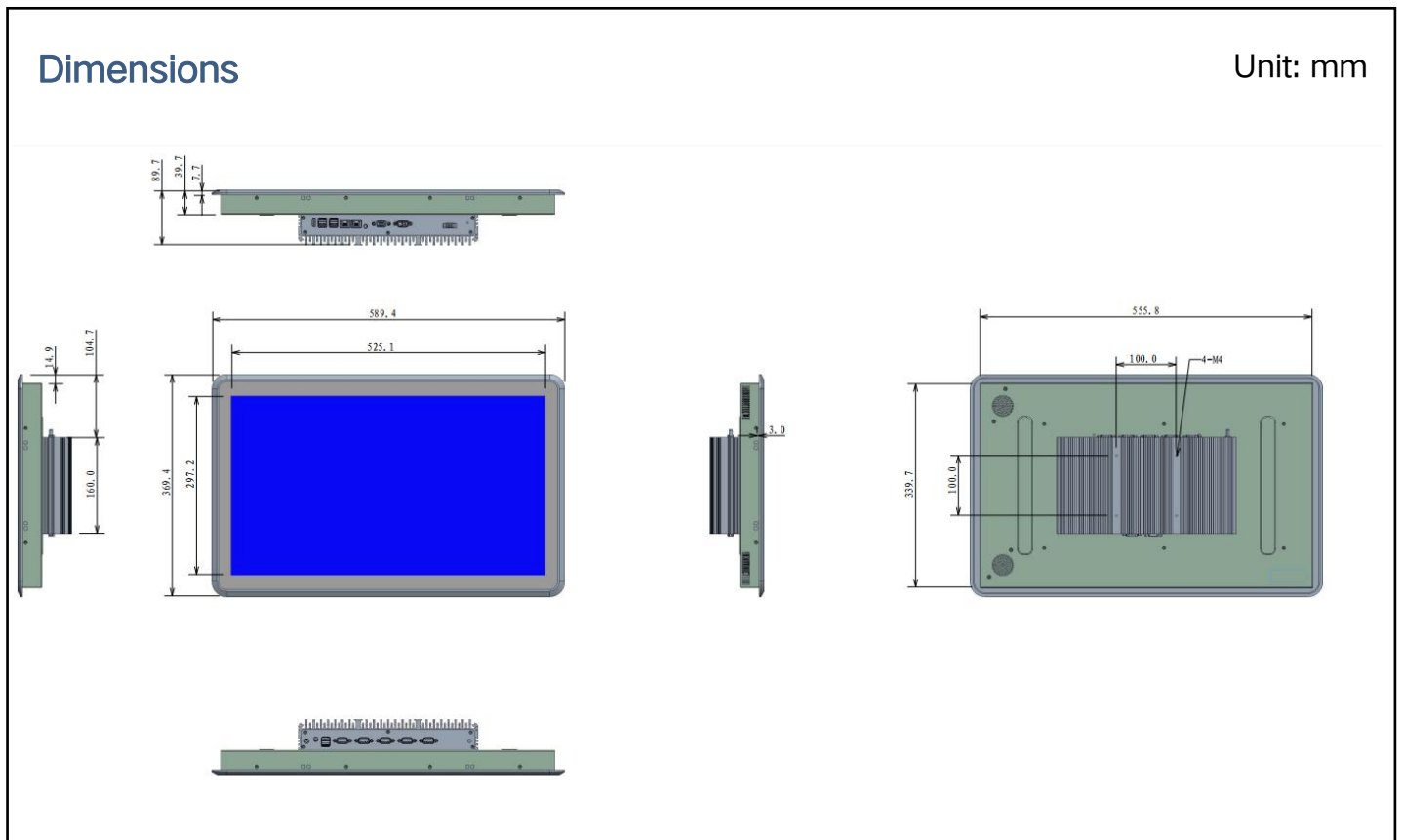
Thin Design

UTC-W2462A is an intelligent, fanless panel PC, 23.6" Panel PC equipped with an Intel® Celeron J1900 processor. Meeting the demands of harsh environments, in addition, the dual GbE LAN, 6 x serial ports, 6 x USB ports, make device connection and integration easy.

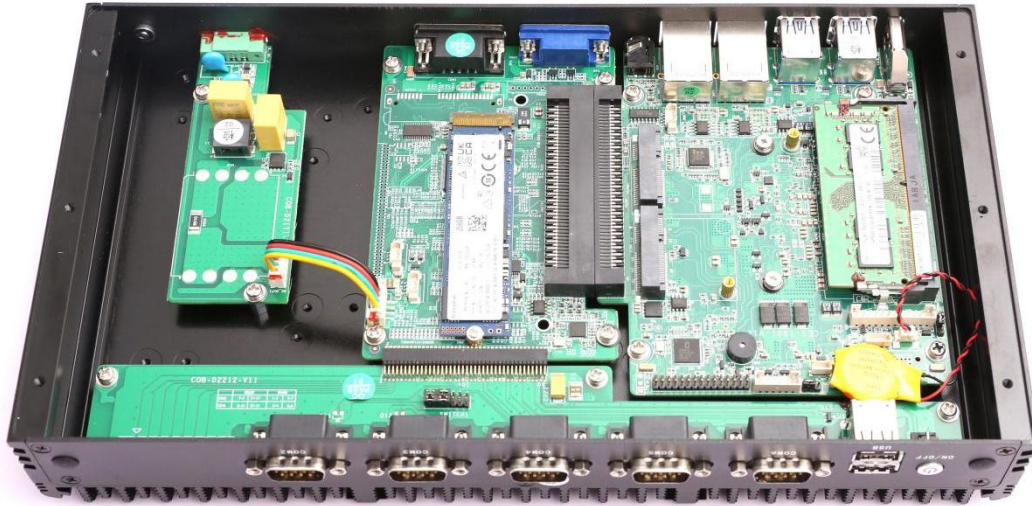
## Specifications

Processor	CPU	Intel Baytrail-D Celeron J1900, 2.0~2.42GHz, 4cores, 4threads, 2M cache, 22nm,TDP 10W	
	Cooling System	Fanless	
	Memory	Single Socket, 4GB-8GB DDR3L	
	Storage	mSATA SSD Full Size+SATS 2.5"SSD	
	I/O ports		USB: 5xUSB2.0+1xUSB3.0, Type-A
			COM: 6xRS232, DB9, 2*RS485/RS422 optional
			Dual Display: 1xHDMI (1920*1200 @30Hz) 1*VGA (1920*1200 @30Hz)
		Audio: 1×Mic-in, 1x Line-out	
Network(LAN)	Expansion: MINI-PCIE		
Input Voltage	Input Voltage	12V DC (3 Pin Phoenix Connector) , optional 9V-36V DC	
	Control SW/LED	Power Button, AT & ATX Model	
LCD Display	Display Type:	23.6 inch TFT LED Panel( LED Backlight)	
	Max. Resolution:	1920x1080/ 16:9	
	Luminance(cd/m <sup>2</sup> )	300nits	

<b>Touchscreen</b>	Touch Type	Capacitive Touch
<b>OS Support</b>	OS Support	Microsoft Windows 7/ Windows 10/ Windows 11/Linux
<b>Environment</b>	Operating Temperature	0°C ~ 50°C(14~ 140 °F)(extend temperature optional)
	Storage Temperature	-10°C ~ 60°C(-4 ~ 158 °F)
	Front Panel Protection	IP65 compliant
<b>Mechanical</b>	Dimensions	(W*D*H)589.4(L)x369.4(W)x89.7(H)mm cutout size: 555.8(L)x339.7(W)mm
	Weight	8.6 KG N.W.
	Color	Black
	Material	Aluminum
	Certification	CE / RoHS
<b>Custom Service</b>	Custom Service	Custom BIOS, System Encryption, Custom LOGO







- Cable-less design and Board to Board design
- Highly compatible
- Modular design
- Easy operation: easy assembly and easy Maintenance
- Supports customization

Packing List	Ordering Information
1x UTC-W2462A	UTC-W2462A: Projected Capacitive Touch Version
1x Power Adapter	<b>Operating Systems</b>
<b>Optional accessories</b>	WIN7 32bit 64bit EN/CN
VESA Bracket	WIN10 32bit 64bit EN/CN
Power Cable 3-pin 200cm	WIN11 32bit 64bit EN/CN
	Linux Ubuntu 12.04/16.04/18.04