

UTC-W2492A

23.6 inch Industrial Panel PC



Features

- Aluminum die-casting chassis, fanless design
- Wireless Design
- 23.6 inch LED TFT LCD, capacitive touch
- Intel 10th Gen. Core I3/I5/I7 CPU
- 6*COM, 2*LAN, 6*USB
- AT & ATX Model
- Front Panel IP65 Level

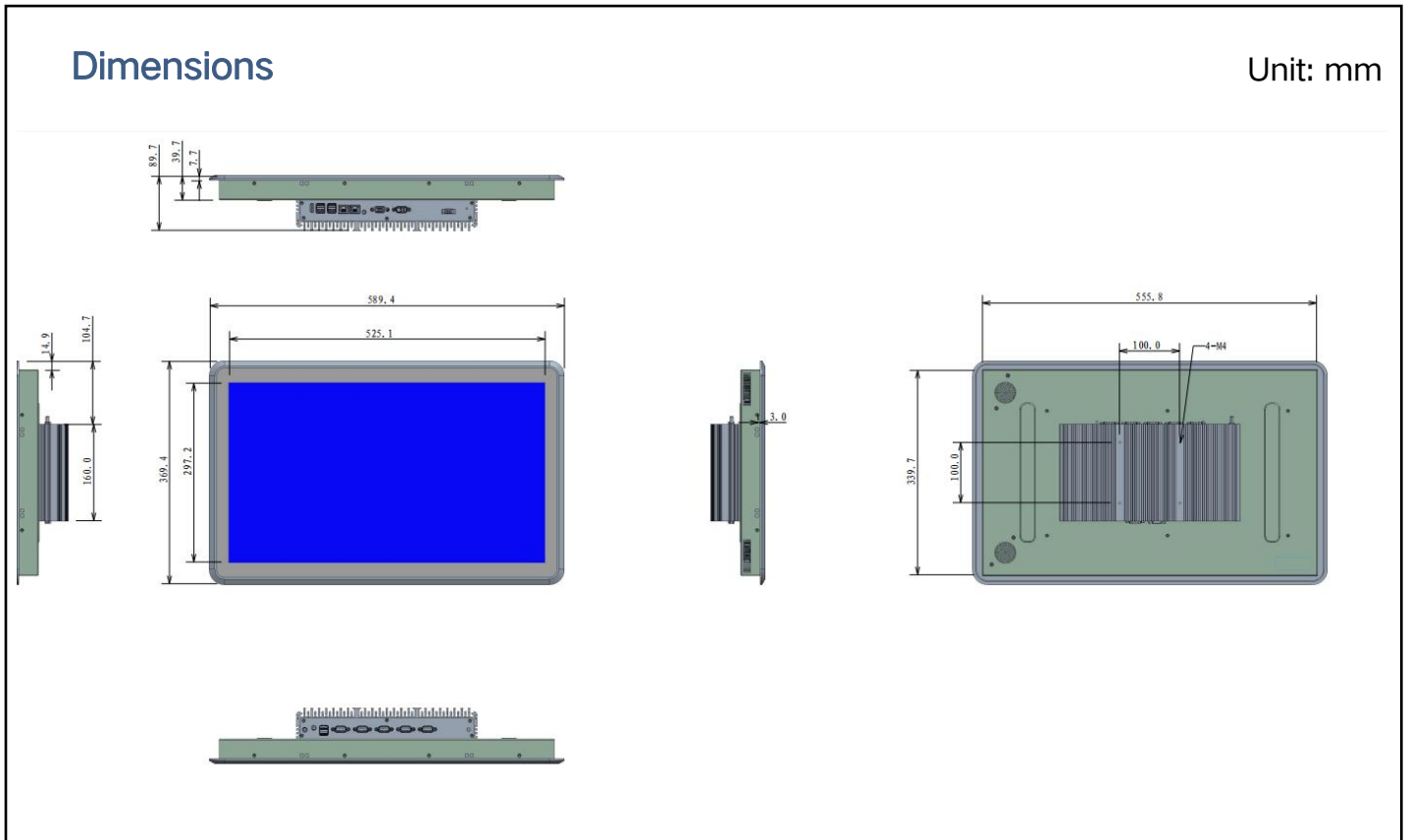


UTC-W2492A is an intelligent, fanless panel PC, 23.6" Panel PC equipped with an Intel® 10th Gen. Core processor. Meeting the demands of harsh environments, in addition, the dual GbE LAN, 6 x serial ports, 6 x USB ports, make device connection and integration easy.

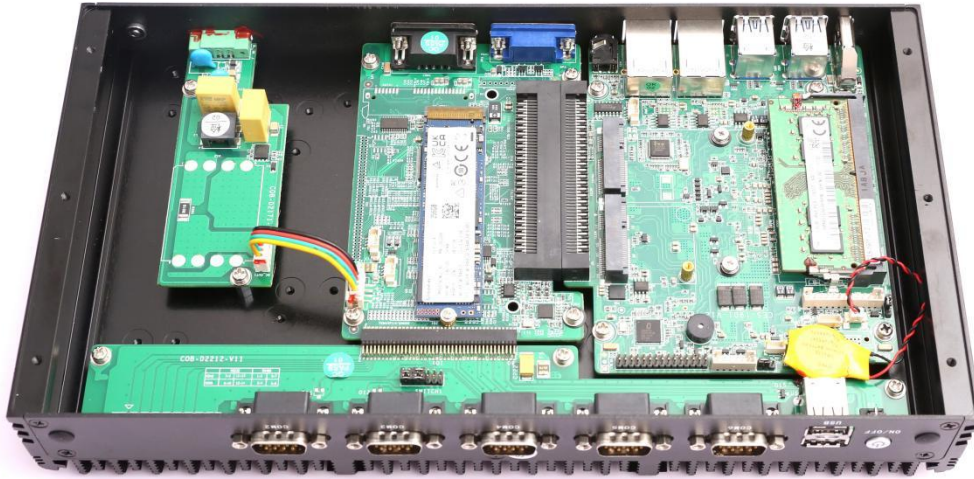
Specifications

Processor	CPU	Intel® i3-10110U Dual Core, 2.10-4.10 GHz 4M Cache, TDP 15W Intel® i5-10210U Quad Core, 1.60-4.20 GHz 4M Cache, TDP 15W Intel® i7-10510U Quad Core, 1.80-4.90 GHz 4M Cache, TDP 15W	
	Cooling System	Fanless	
	Memory	1x DDR4 2133Mhz SO-DIMM Sockets, up to 16GB	
	Storage	M.2 NVME SSD + mSATA SSD	
	I/O ports		4xUSB3.0+2xUSB2.0, Type-A COM: 6xRS232, DB9, 2*RS485/RS422 optional
			Dual Display: 1xHDMI (1920*1200 @30Hz) 1xVGA (1920*1200 @30Hz)
			Audio: 1×Mic-in, 1x Line-out Expansion: MINI-PCIE
Network(LAN)	2x 10/100/1000Mbps Ethernet		
Input Voltage	Input Voltage	12V DC(3 Pin Aviation Connector) , optional 9V-36V DC	
	Control SW/LED	Power Button, AT & ATX Model	
LCD Display	Display Type:	23.6 inch TFT LED Panel(LED Backlight)	

	Max. Resolution:	1920x1080 / 16:10
	Luminance(cd/m ²)	300nits
Touchscreen	Touch Type	Capacitive Touch
OS Support	OS Support	Microsoft Windows 7/ Windows 10/ Windows 11/Linux
Environment	Operating Temperature	0°C ~ 50°C(14~ 140 °F)(extend temperature optional)
	Storage Temperature	-10°C ~ 60°C(-4 ~ 158 °F)
	Front Panel Protection	IP65 compliant
Mechanical	Dimensions	(W*D*H)589.4(L)x369.4(W)x89.7(H)mm cutout size: 555.8(L)x339.7(W)mm
	Weight	8.6 KG N.W.
	Color	Black
	Material	Aluminum
	Certification	CE / RoHS
Custom Service	Custom Service	Custom BIOS, System Encryption, Custom LOGO







- Cable-less design and Board to Board design
- Highly compatible
- Modular design
- Easy operation: easy assembly and easy Maintenance
- Supports customization

Packing List	Ordering Information
1x UTC-W2492A	UTC-W2492A-1: i3-10110U Version
1x Power Adapter	UTC-W2492A-2: i5-10210U Version
Optional accessories	UTC-W2492A-3: i7-10510U Version
VESA Bracket	Operating Systems
Power Cable 3-pin 200cm	WIN7 32bit 64bit EN/CN
	WIN10 32bit 64bit EN/CN
	WIN11 32bit 64bit EN/CN
	Linux Ubuntu 12.04/16.04/18.04